

Calderdale and Leeds Councils

Case study

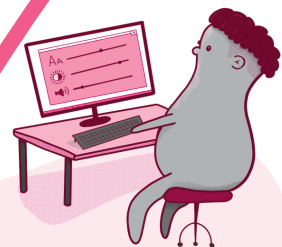
Transforming mainstream inclusion support through authentic co-production

2. The purpose

- Establish shared Universal Expectations to embed inclusion as a core element of school improvement across all settings.
- Introduce a practical evaluation framework to help schools review and strengthen their inclusive practice.
- Equip schools with clear, evidence informed strategies and resources to implement the graduated approach and deliver early, effective support for learners with SEND.

1. The vision

Calderdale and Leeds were looking for innovative ways to strengthen their ordinarily available provision. Their aim was to create a shared framework that enables schools and settings to respond flexibly to the needs of all learners (including those with SEND) within their communities.



3. The collaboration

Funded through the CPP Change Programme, Calderdale and Leeds collaborated to identify flexible solutions. Together, they engaged over 600 stakeholders (including schools and settings, health and SEND professionals, parents and carers, and children and young people with lived experience) to co-produce the guidance and accompanying resources.

4. The work

Both councils worked independently to reflect their local priorities and ambitions, tailoring the work to the needs of their communities, while sharing learning throughout.

Pop Pop Studio supported the process by developing digital solutions that captured the work and created an agile, easily updated resource.



See the directories in action



mic.calderdalelocaloffer.org.uk



www.poppop.studio/belong

imp.leedslocaloffer.org.uk

5. The impact

For SEND Teams

- The directory is now a **dynamic, living tool**, which teams can easily keep up-to-date
- SEND specialists have access to all the resources and can support a wider range of needs
- **Real-time analytics** show which categories and resources are most used
- Teams have more **time to focus** on specialist support for individual learners

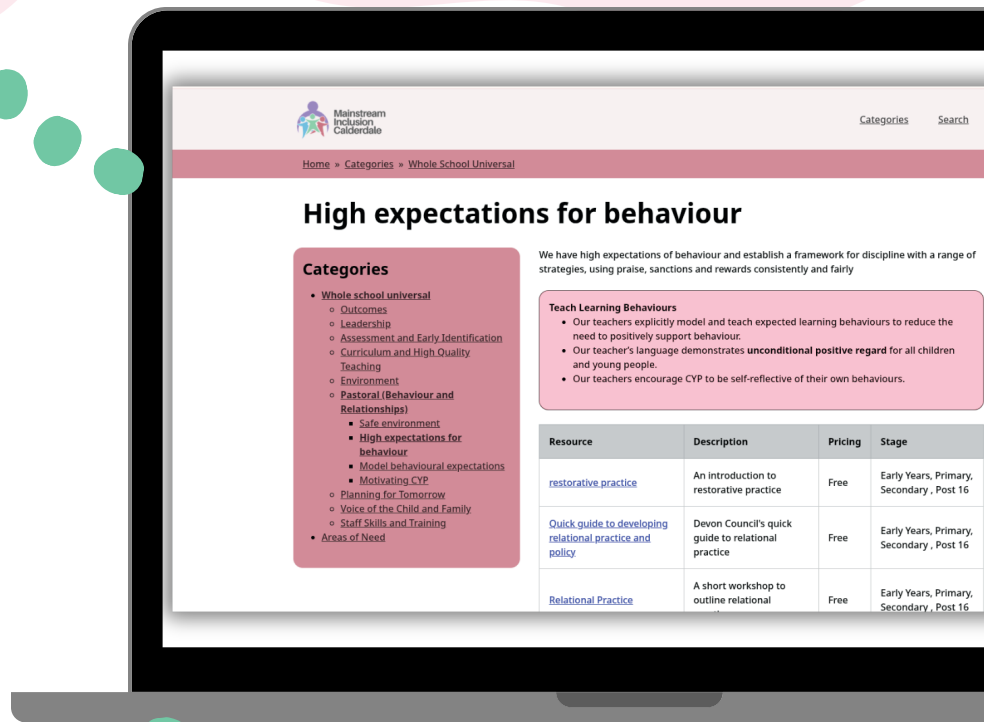
I can just share a link with my SENCOs, and they've got really specific interventions and resources

Educational Psychologist, Leeds



For SENCOs

- SENCOs have a resource for in-school CPD and teachers can self-serve effective classroom strategies
- A **shared language** to be used across IEPs, EHCPs, pupil premium strategies, SEND Local Offer, and more.
- 500+ SENCOs and headteachers attended the launches, demonstrating widespread engagement and buy-in.



6. The result

Leeds and Calderdale successfully created:

- A local online database of curated, evidence informed resources.
- A bespoke online audit tool to support settings in evaluating and improving their practice.
- Best practice recommendations and an accompanying resource bank to support quality assurance.

Content is created and maintained locally by each council, ensuring the tool can evolve in response to each area's priorities and remain tailored to local needs.



Book a demo
www.poppop.studio